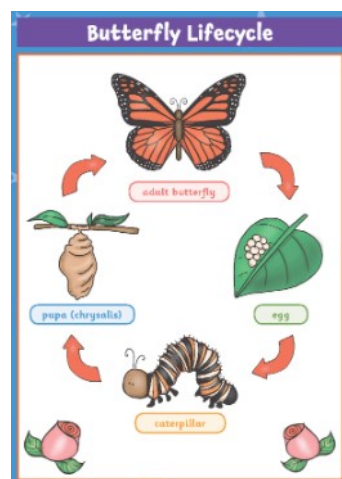


Contact Us

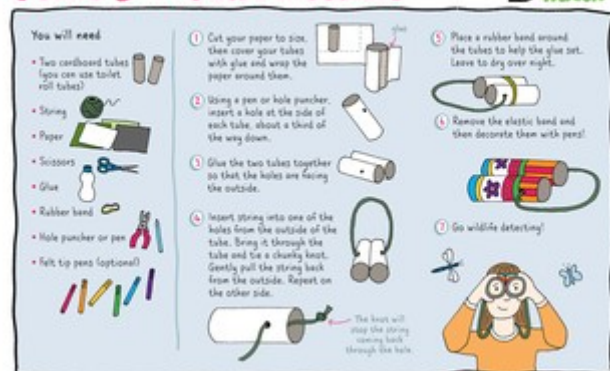
Please feel free to email us with any photos of your child's home learning.

We would love to share and celebrate it with the whole class.

reception@gladwin.brighton-hove.sch.uk



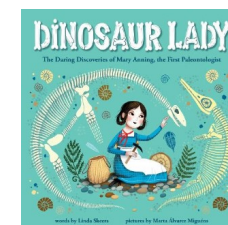
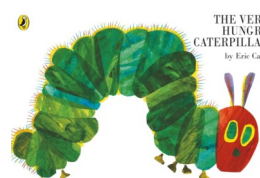
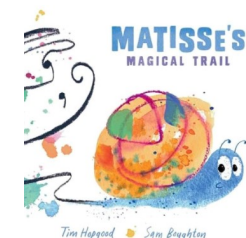
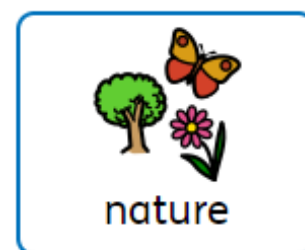
Make your own binoculars



Our YR Summer 2 learning journey is...

Be Wild!

What can we do to be '*Wild for 30 days*' and take part in the National Trust's annual challenge?



Home Learning

This grid shows home learning ideas connected to our class learning for the second half of this summer term.

We would like to encourage all children to complete an activity every fortnight and bring it in to show and celebrate with the class.

Phonics and Reading

To ensure your child continues to make progress and becomes a fluent reader please remember to:

1. Practise any letter sounds they are still unsure about—we have now learnt all the sounds we will this year.
2. Practise reading the mini-book each week that you will find in the Reading Folder.
3. Logon and read the free Rhino Reader e-Book each week.

Thank you for your continued support.

Communication and

Language

Go on a minibeast hunt in an outdoor area and TALK ABOUT what you SEE and HEAR.

Physical Development

Practise developing your scissor skills by cutting pieces of paper to make a minibeast picture/collage

Personal, Social and

Emotional Development

Minibeasts are very HELPFUL creatures, e.g. worker bees look after the queen bee. What things do you do at home that are kind and helpful?

Literacy

Write a clue about a minibeast, e.g. 'It has 8 legs' and see if someone in your family can read it and work out the answer.

Understanding the World

Go litter picking in your local area and show how much you care for local wildlife. Remember to wear gloves and never pick up glass or anything sharp!

Mathematics

Butterflies have a symmetrical pattern.
Create your own symmetrical butterfly.

Expressive Arts and Design

Use playdough / clay to create your own minibeasts—real or imaginary.

You can also visit the link below for some great ideas from The National Trust

[https://
www.wildlifewatch.org.uk/
activities](https://www.wildlifewatch.org.uk/activities)